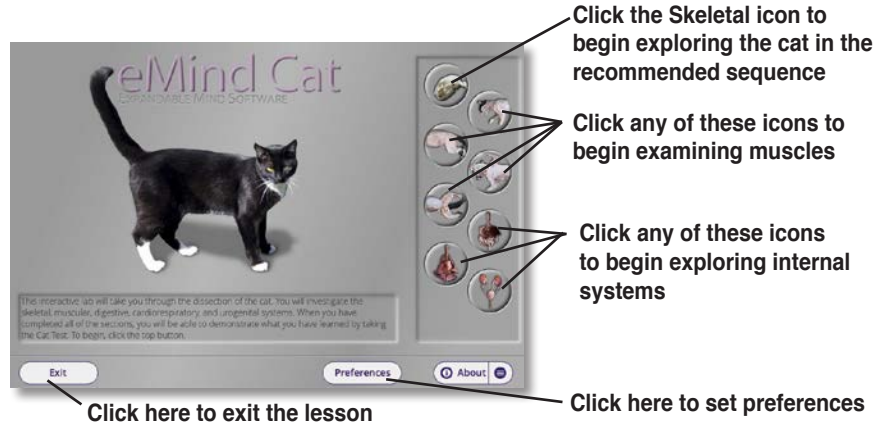


GETTING STARTED WITH eMind CAT

How to Begin



- Skeletal System**
Build and label a cat skeleton.
- Shoulder Muscles**
Examine the muscles of the shoulder and head.
- Trunk Muscles**
Explore the muscles of the lower abdomen and legs.
- Pectoral Muscles**
Identify the muscles of the chest and arms.
- Pelvic Muscles**
Examine the muscles of the pelvis and legs.
- Digestive System**
The internal organs used for digestion.
- Cardiorespiratory System**
Investigate respiratory and circulatory organs.
- Urogenital System**
Explore the organs of the reproductive and excretory systems..

Completing the Guided Dissection

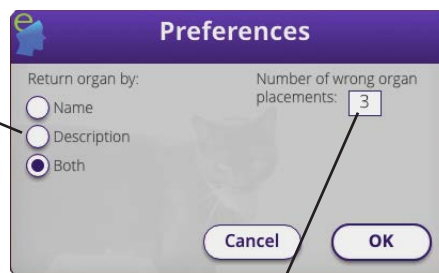
As you complete each cat system, *eMind Cat* enables you to review topics and test your knowledge with the system quizzes.

1. Click the **Skeletal** button on the main screen.
2. Complete the module by clicking and dragging the bone until the skeleton is complete. When you finish, the program gives you the option to continue or review.
3. If you are ready for the Skeletal quiz, click **Continue**, or spend more time studying the names of the bones.
4. Click **Continue** and complete the quiz as directed by the software.
5. Click **Repeat** to take the quiz over, or click **OK** and then **Next** to continue to another module in the dissection. Some modules ask you to click specified parts of the cat, while others ask you to drag specified organs to and from their proper locations in the cat's body.
6. When you complete all eight modules, *eMind Cat* gives you the option of completing the comprehensive Cat Test, or reviewing other modules before continuing into the test.

Setting Preferences

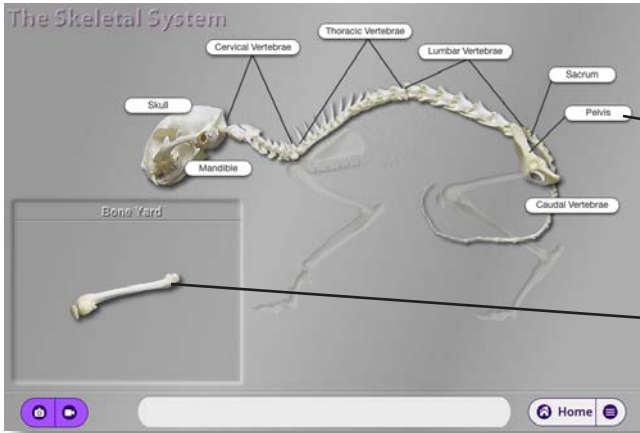
Press the Preference button on the home screen to display the Preferences dialog box.

Click a button to be quizzed by organ names, their descriptions, or both



Sets the number of incorrect placements of organs accepted during a quiz

DISSECTING THE CAT



Rebuilding the Skeleton

Skeletal System

When you correctly place a bone, a label with its name appears

Drag bones from here to their correct location in the cat skeleton

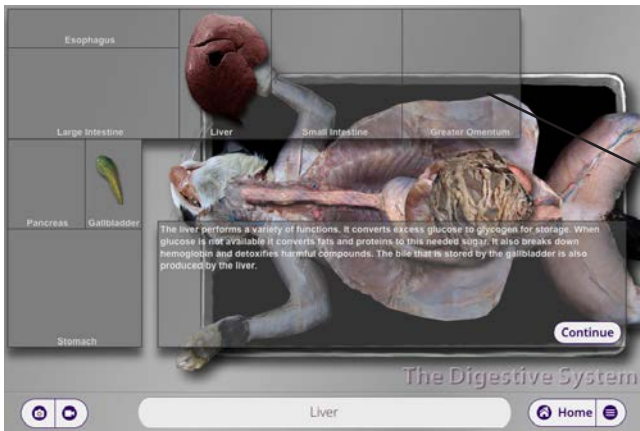
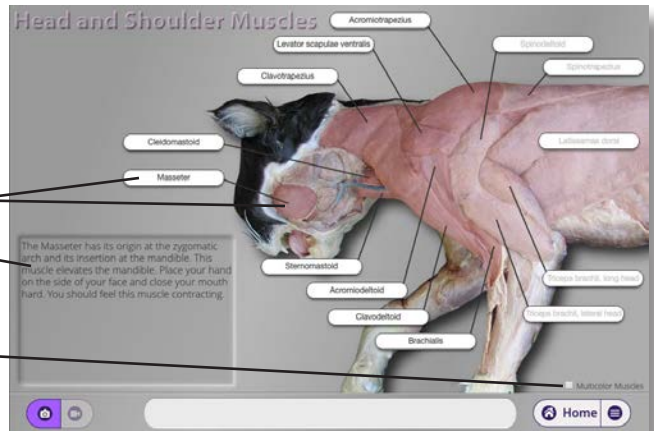
Muscles

Head and Shoulder, Trunk, Pectoral, and Pelvic Muscles

Click on the muscle or its label

Information about the selected muscle appears here

Select this checkbox to display muscles in contrasting colors.



Internal Systems

Digestive, Cardiorespiratory, and Urogenital Systems

Drag each organ to the correct location on this dissection tray.

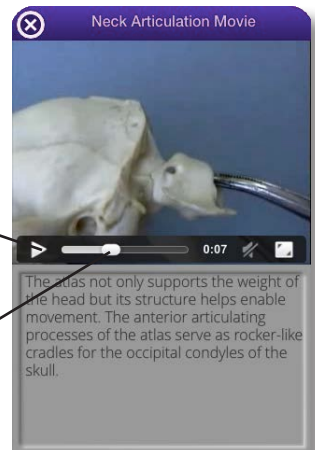
Using the Media Window

Look for the media icons in the lower corner of each dissection screen to flash. Click any flashing icon to see a media window that includes pictures or movies of the indicated cat part.



Click here to view a picture

Click here to view a movie



Click here to start or stop a movie

Drag this slider to advance or rewind a movie